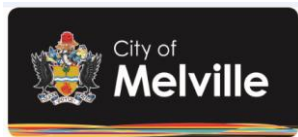


## FOGO forum

### Session 3: local government services

**Brendan Doherty** – Executive Manager Strategic Projects  
Southern Metropolitan Regional Council

**Paul Molony**– Manager Recovery & Waste  
City of Melville



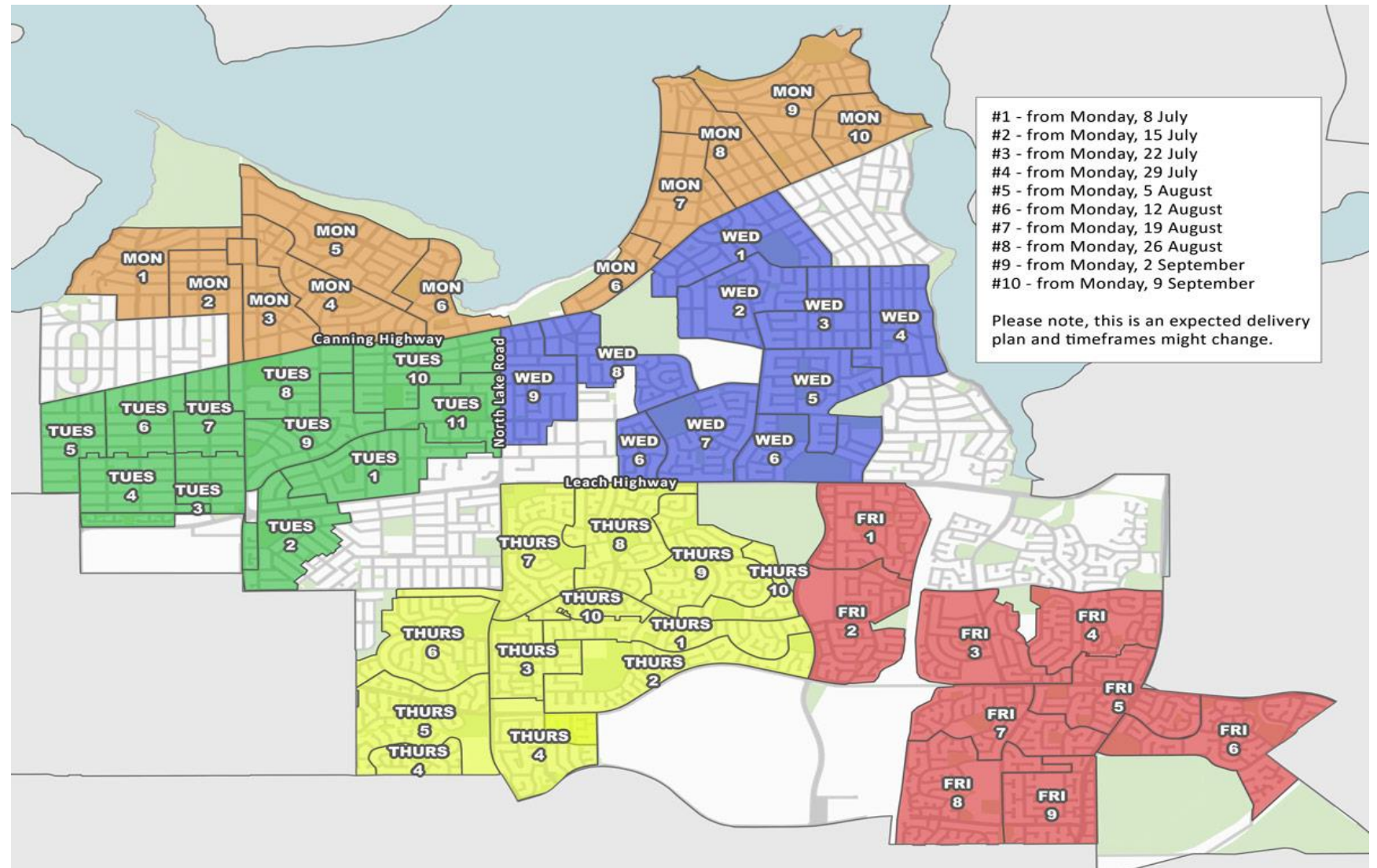
# What did our residents get?

To add to their **Recycling** bin residents receive:

- 1 x new 240L **FOGO** bin
- 1 x new 140L **General Waste** bin
- 1 x new kitchen caddy with a years' worth of compostable liners, 3 x bin magnets, calendar and information on how to use the 3-bin system
- old bin removed



# Rollout methodology





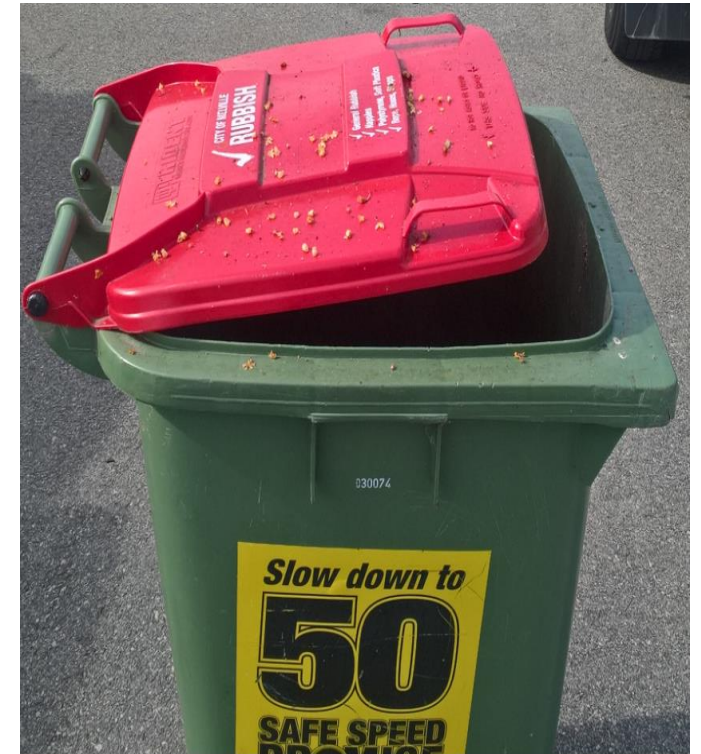
It'll be just a few bins they said....







# FOGO fail & nice try!





# How is FOGO stacking up post roll out?

✓ roll out penetration to all property types? >>>>>

Council	Proportion of residential properties on FOGO service
East Fremantle	95.4%
Fremantle	74.4%
Melville	98.3%

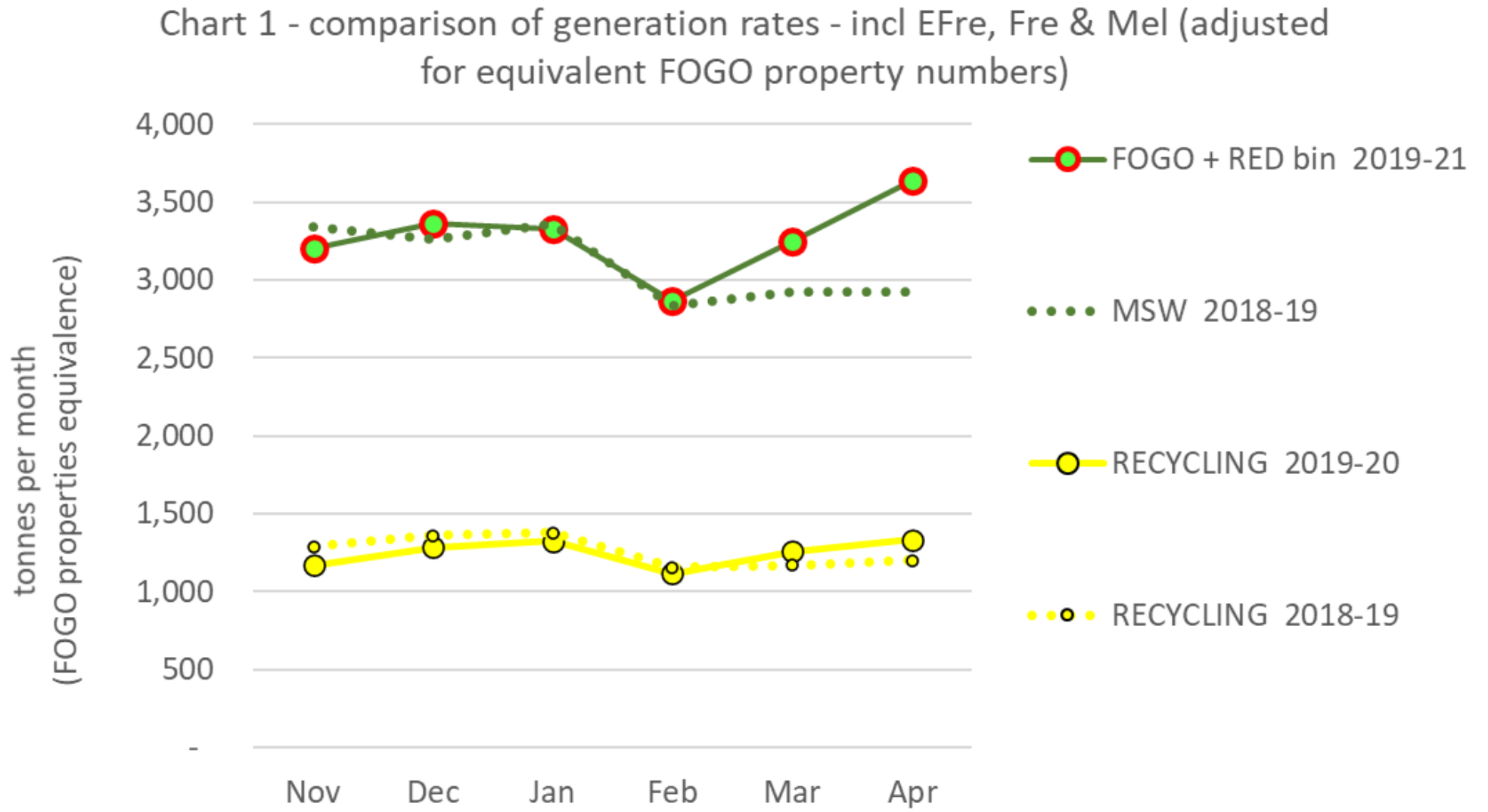
✓ how well are residents separating >>>>> with their new bins?

Council	tonnes placed in FOGO bin	for each tonne in RED bin
East Fremantle	2.1	1
Fremantle	1.7	1
Melville	2.2	1
Overall	2.1	1
<i>Predicted by Melville trial</i>	2.0	1

✓ recovery rates possible? >>>>>

FOGO Recovery Rate of 78% equates to	62.7% overall kerbside recovery rate
FOGO Recovery Rate target 90% equates to	68.0% overall kerbside recovery rate

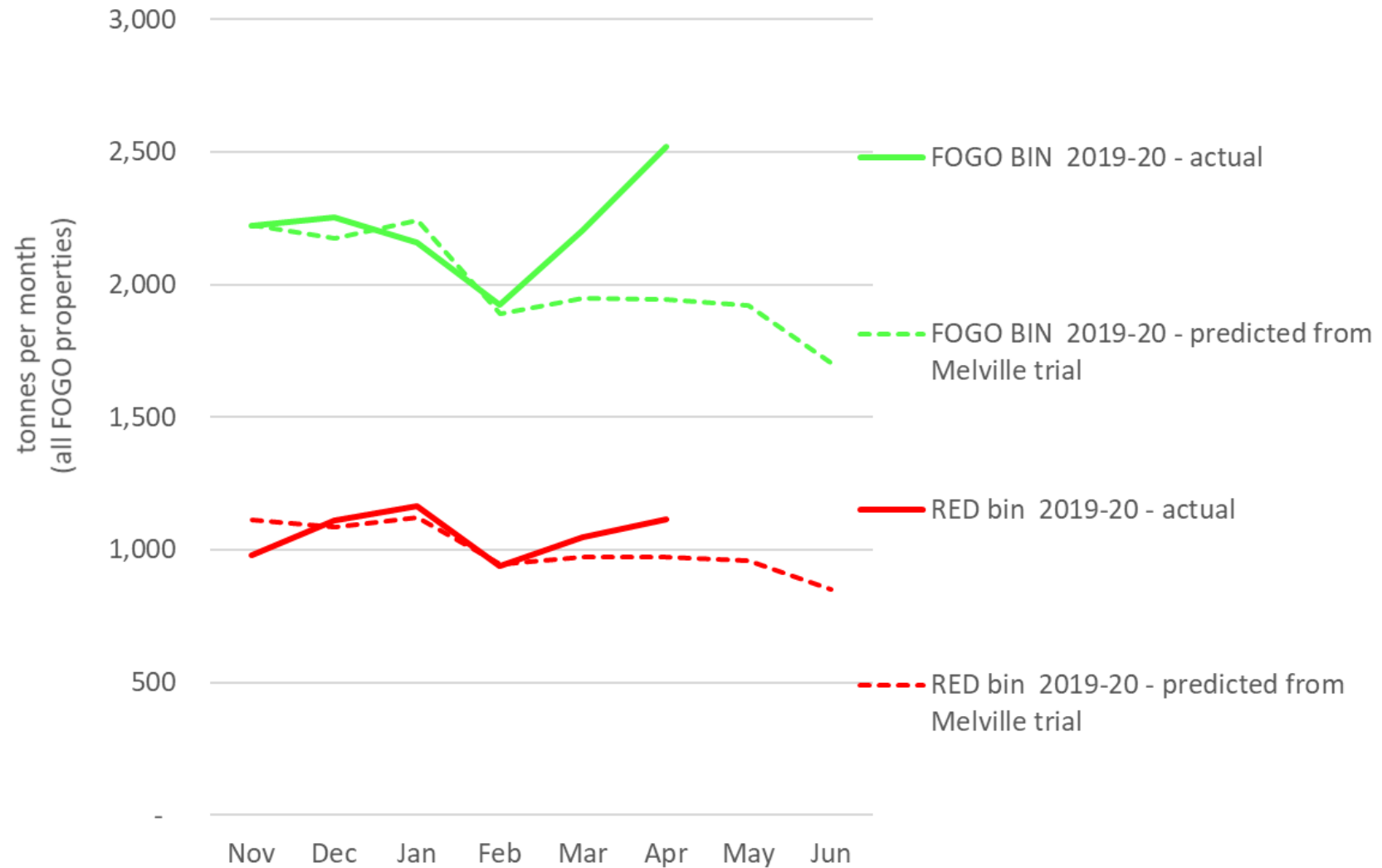
# Overall generation rates are as predicted by trial (*apart from COVID impact?*)



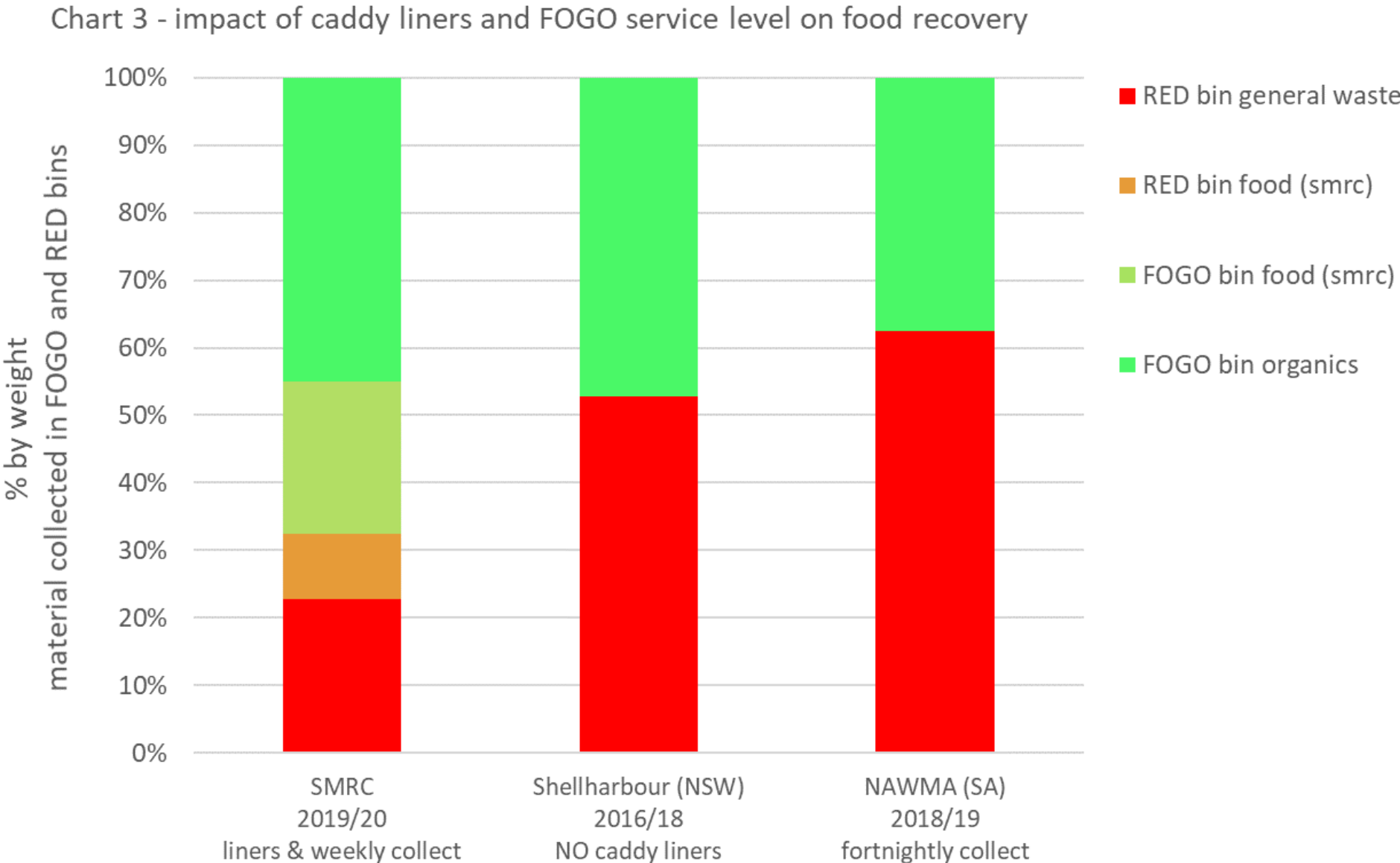


# Residents' use of the two new bins is excellent

Chart 2 - comparison of predicted and actual FOGO and RED bin tonnages collected (incl EFre, Fre & Mel)

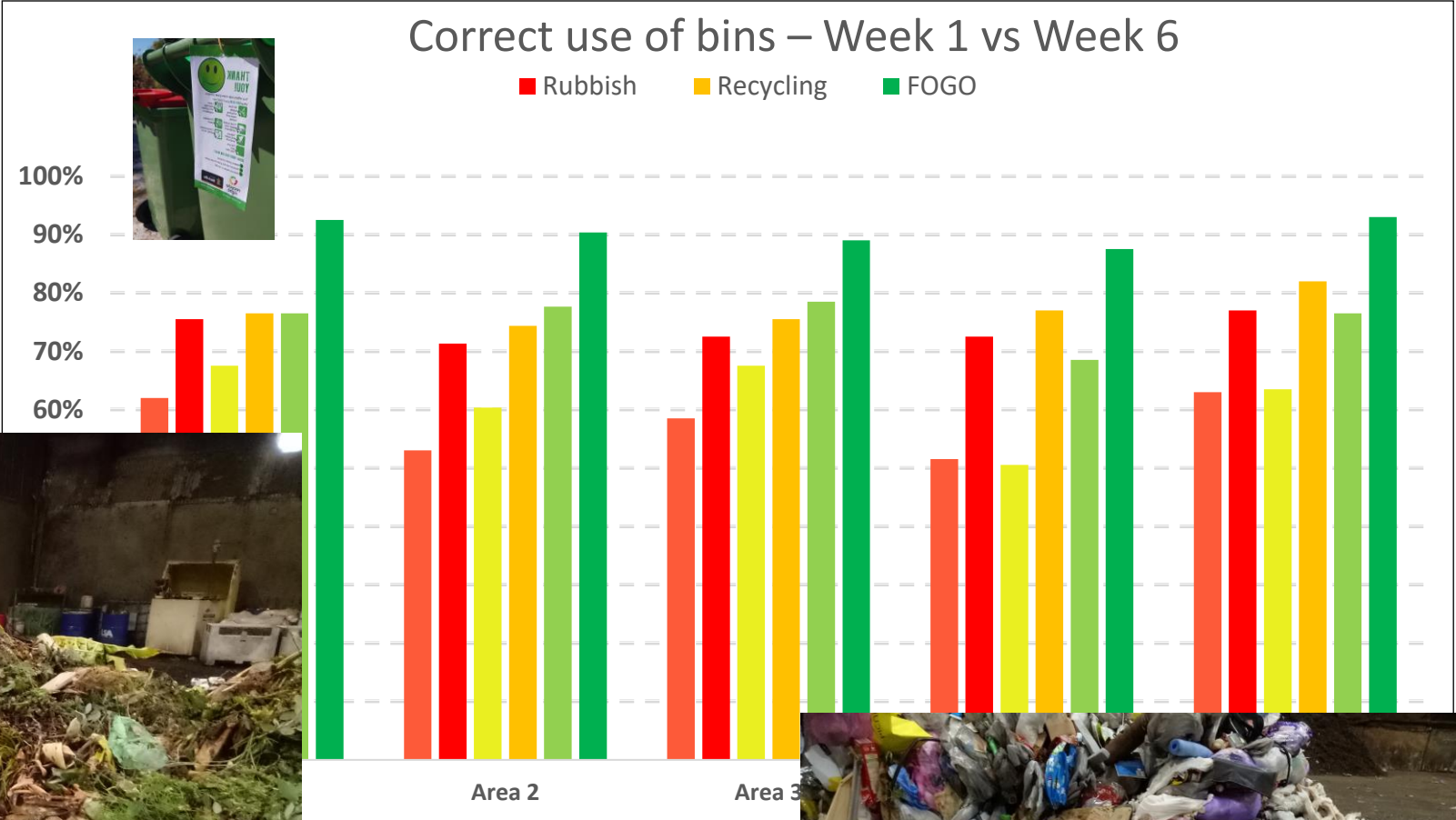


# Why caddy liners and weekly FOGO collections are so important for food recovery?



# SMRC Bin tagging

FOGO



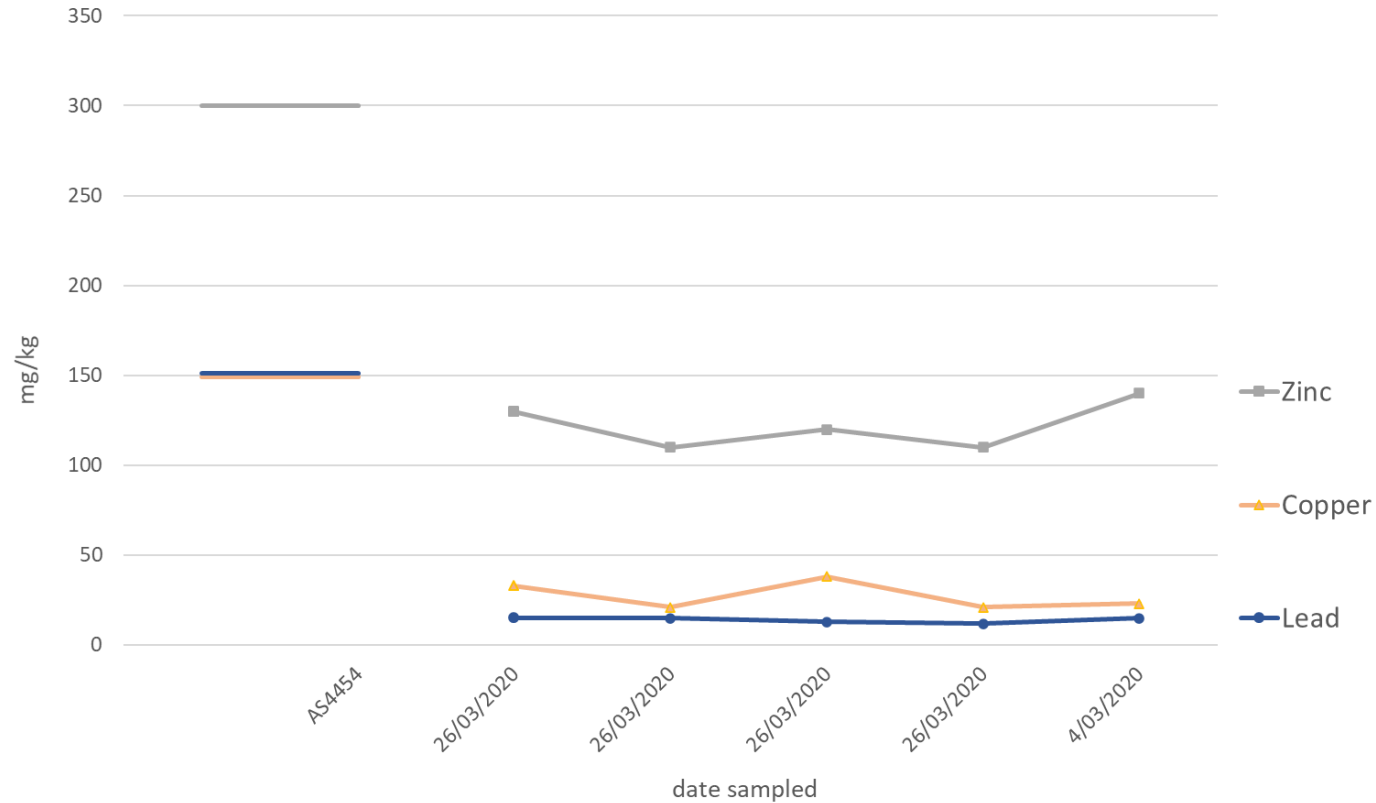
GENERAL  
WASTE





# FOGO compost development and testing

Chart 4 FOGO testing results March 2020 - heavy metals



FOGO final product April 2020

Glass and rigid plastic (> 2mm) 0.07%

# Where to from here?

- FOGO compost sales to commercial and retail outlets
- Waste Composting Facility re-roof & reconfigure for full FOGO processing
- Comms and education, bin tagging, waste auditing and MUD's

