



Waste and recycling snapshot: Western Australia 2021–22

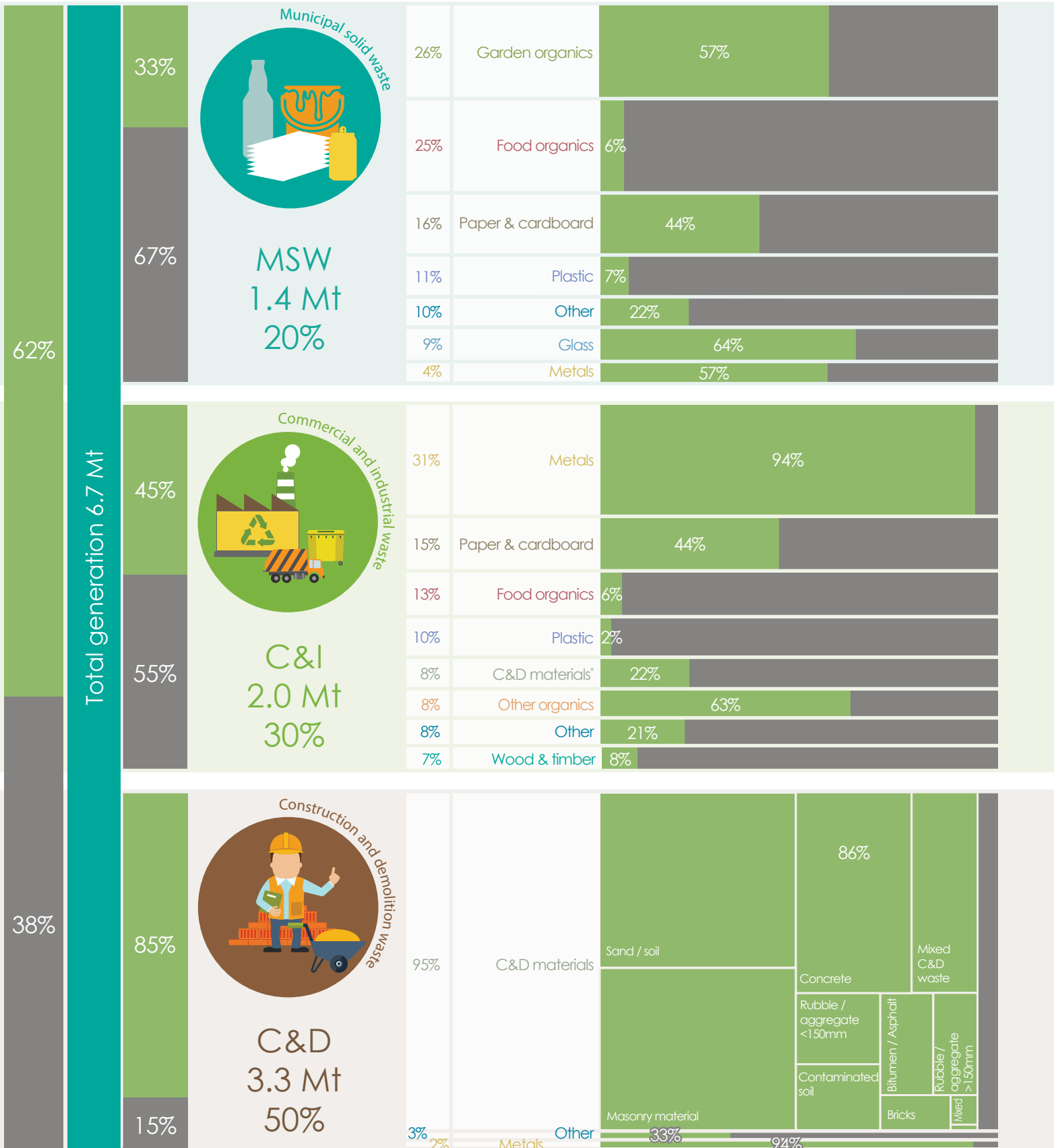
Generation in WA

Generation by stream 2021–22

Proportion of generation

Material

Generation by material – **recovery**:landfill



Data sourced from *Waste and recycling in Western Australia 2021–22* and national waste generation and recycling data. Some recycling data is estimated based on assumptions provided within these sources. Band width is proportional to tonnes.

* Recovery rates of individual C&D materials cannot be estimated. Quantities of recovered C&D material types are provided in the *Waste and recycling in Western Australia 2021–22* report and Recycling dashboard.

