



JOSH BYRNE
& ASSOCIATES

LANDSCAPE
SUSTAINABILITY
COMMUNICATIONS

OneOneFive Hamilton Hill

Waste Avoidance & Resource Recovery Initiatives

Presentation Outline

- Introduction to 115 Hamilton Hill by DevelopmentWA
- Overview of key waste avoidance and resource recovery initiatives
- FOGO
 - Sourcing
 - Quality control
 - Handling
 - Application



115 HAMILTON HILL Project Overview



WASTE AVOIDANCE & RESOURCE RECOVERY

C&D for Road Base



WASTE AVOIDANCE & RESOURCE RECOVERY

C&D for Drainage Aggregate



WASTE AVOIDANCE & RESOURCE RECOVERY

Brick & Timber for Landscape Features



WASTE AVOIDANCE & RESOURCE RECOVERY

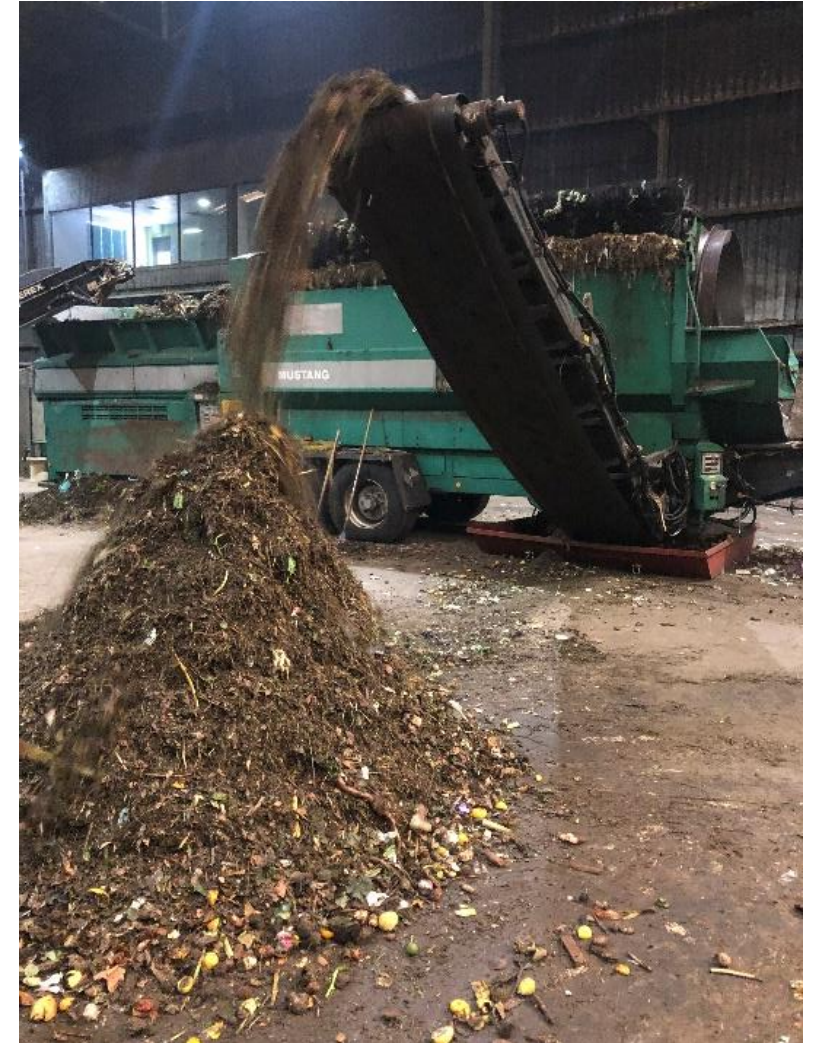
FOGO Derived Soil Conditioner



FOGO DERIVED SOIL CONDITIONER Specification – Source

In line with the *115 Waste Avoidance and Resource Recovery Strategy*, soil conditioner that has been made with a minimum of 30% FOGO derived materials is preferred provided that it can be certified as meeting all relevant standards and quality control criteria including, but not limited to, *AS 4454 Composts, Soil Conditioners and Mulches*.

Preference should be given soil conditioners made from FOGO derived material collected by the Resource Recovery Group in Canning Vale for the purpose of demonstrating the meaningful reuse of locally generated organic waste.



FOGO DERIVED SOIL CONDITIONER

Specification – Quality Control

To ensure appropriate quality control, a 25L sample bag of the nominated product is to be provided to the Landscape Superintendent, along with documentation confirming AS 4454 compliance prior to ordering and delivery to site.



FOGO DERIVED SOIL CONDITIONER

Specification – Handling on Site

Once on site the site soil must be thoroughly wetted to a minimum of 200mm before the installation of soil conditioner to ensure microbial activity in the soil conditioner is sustained.

Soil conditioner **MUST NOT** be allowed to dry on the surface before incorporation and **MUST** be incorporated into the site soil immediately after spreading.

All conditioned soil areas must be kept moist up until the irrigation system is installed and operational.



FOGO DERIVED SOIL CONDITIONER Specification – Application to Shrubs & Groundcovers

For all shrub planting areas except mixes 10 & 11 (revegetation): Evenly spread 50mm of soil conditioner across the entire garden bed and blend with top 200mm of site soil.



FOGO DERIVED SOIL CONDITIONER Specification – Application to Trees

Trees: Excavate the planting hole to 3 x times the volume of the grow bag size and back fill with 15% soil conditioner site soil mix.



FOGO DERIVED SOIL CONDITIONER Specification – Application to Turf

For turf areas: Evenly spread 50mm of soil conditioner to all turf areas and blend with top 200mm of site soil.





www.joshbyrne.com.au