








**BUNBURY HARVEY**  
**REGIONAL COUNCIL**  
HARVESTING RESOURCES FROM YOUR WASTE

-  Bunbury-Harvey Regional Council (BHRC) is a statutory local government authority established in 1990 by the City of Bunbury and the Shire of Harvey.
-  The primary purpose of BHRC is waste recovery and disposal. BHRC is not responsible for waste collection services. This responsibility lies with the individual local governments.
-  The BHRC has two main areas of operations
  -  Stanley Road Waste Management Facility – transfer station and class II landfill
  -  Wellington Regional Organics Processing Facility – open windrow composting facility with a Mobile Aeration Floor System – (MAFS)



**BUNBURY HARVEY**  
**REGIONAL COUNCIL**  
HARVESTING RESOURCES FROM YOUR WASTE

BHRC owns and manages the Stanley Road Waste Management Facility, located at Lot 45, Stanley Road, Wellesley. This site encompasses a waste transfer station and a Class II landfill site.

Approval has just been received from DWER to relocate the Regional Organics Processing Facility to Stanley Road from it's current location 20 kms away in the Shire of Dardanup.



# Wellington Waste Group

Wellington Waste Group consists of 7 local governments

- City of Bunbury
- Shire of Capel
- Shire of Collie
- Shire of Donnybrook-Balingup
- Shire of Harvey
- Shire of Dardanup
- Bunbury Harvey Regional Council





# FOGO Implementation in the south west since 2011

Local government	Year implemented	Number of households
City of Bunbury	2013	15,000
Shire of Donnybrook-Balingup	2014	2,760
Shire of Capel	2013	6,650
Shire of Collie	2017	4,000
Shire of Harvey	2019	11,000
City of Busselton – 6 month trial	2019	700
Shire of Augusta Margaret River	2019	6,300
<b>Total</b>		<b>46,410</b>



# Tonnages and contamination

Local government	Tonnages per annum	% of contamination as at September 2019
City of Bunbury	6,496	1.96 %
Shire of Donnybrook-Balingup	5,008	1.89 %
Shire of Capel	2,028	4.30 %
Shire of Collie	1,260	1.03 %
Shire of Harvey	5,008	2.20 %
Shire of Augusta Margaret River	2,448	3.02 %
<b>Total</b>	<b>17,994</b>	<b>2.40 % average</b>

# What is accepted in the system?



Meat, bones, fruit  
and veg scraps



Small branches,  
flowers, lawn  
clippings

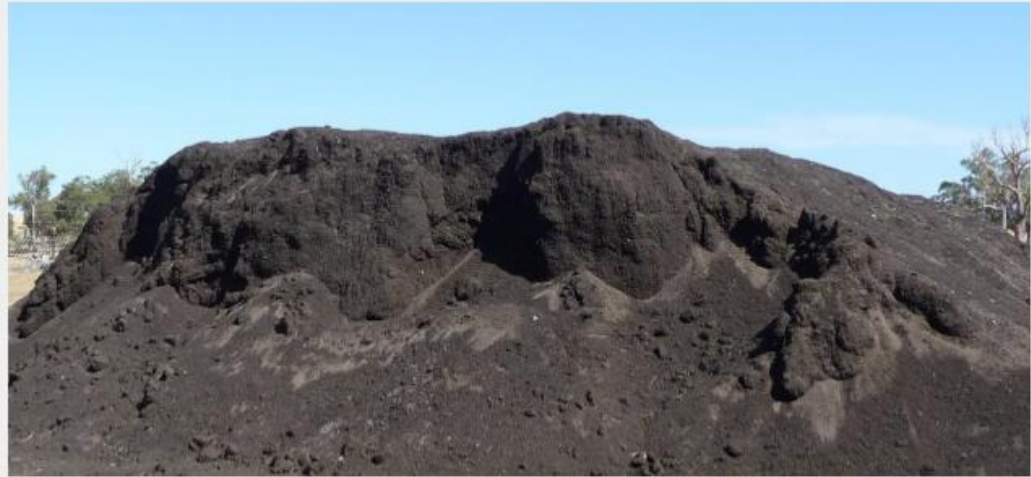


Pizza boxes, dog poo,  
cardboard, shredded  
paper, compostable bags





# Final Compost Product



**Organic Certification  
AS 4454-2012**

**Product is screened to 10mm**

360 Organics



[360organics.com.au](http://360organics.com.au)





# Community

The results of FOGO speak for themselves – apply for funding and implement

Engage and inform your community in the results FOGO brings for waste diversion

Refrain from workshops and focus groups asking your community if they want to implement FOGO

Avoid Facebook posts and polls

Council to make a decision on introducing FOGO

If you have a bin service you get a FOGO service  
Harvey did this and it worked well

Some of our other local governments have a mix of the 2 and 3 bin system due to our demographic – try not to do this.



# Internal Communications

Talk to your Regional council - They are there to support you

Regional council's role to make sure your staff feel supported

Meet regularly and be able to pick up the phone anytime to chat.

Local governments require dedicated customer service pre, during and post rollout. Have a phone number people can call where someone informed can answer their question or get back to them.

Develop a 12 month communication plan and work hard to stick to it  
– stay accountable

Develop an FAQ sheet for customer service staff and continuously improve

Have a good relationship with your collector and drivers, visually inspect loads being dropped off and find out where they have come from.



# Waste Education – Waste Sorted



A Waste Authority Program

# Harvey, let's sort what goes where



Meat, bones, fruit and veg scraps



Small branches, flowers, lawn clippings



Pizza boxes, dog poo, cardboard, shredded paper, compostable bags



Plastic bags, wrap and thin plastic packaging



Nappies, personal hygiene waste, polystyrene foam



Damaged textiles



Household waste



Aluminium and steel cans



Glass bottles and jars



Plastic bottles and containers



Cardboard (flattened)



Paper (no shredded paper)



For more information please visit  
[watchyourwaste.wa.gov.au](http://watchyourwaste.wa.gov.au) | [harvey.wa.gov.au](http://harvey.wa.gov.au)



# What can go in your FOGO bin?



✓ If it once grew it can be placed in your organics bin

✓ Please use compostable bags only

✓ Pizza boxes, junk mail, cardboard and paper can be placed in your FOGO bin

Meat, bones, fruit and veg scraps



Small branches, flowers, lawn clippings



Pizza boxes, dog poo, cardboard, shredded paper, compostable bags



For more information please visit  
[watchyourwaste.wa.gov.au](http://watchyourwaste.wa.gov.au) | [harvey.wa.gov.au](http://harvey.wa.gov.au)



# What can go in your general waste bin?



- ✓ Please remember this bin is sent to landfill where it is buried forever
- ✓ Please remember hazardous waste in this bin can cause harm to the environment and personal health
- ✓ Please ensure there is no food waste or recycling in this bin

Plastic bags, wrap and thin plastic packaging



Nappies, personal hygiene waste, polystyrene foam



Damaged textiles



Household waste



For more information please visit  
[watchyourwaste.wa.gov.au](http://watchyourwaste.wa.gov.au) | [harvey.wa.gov.au](http://harvey.wa.gov.au)



# What can go in your recycling bin?



- ✓ Please ensure items are placed loosely in your bin and are not tied up in plastic bags
- ✓ Please remove lids from bottles and jars and rinse containers
- ✓ Please flatten your cardboard boxes

Aluminium and steel cans



Glass bottles and jars



Plastic bottles and containers



Cardboard (flattened)



Paper (no shredded paper)



For more information please visit  
[watchyourwaste.wa.gov.au](http://watchyourwaste.wa.gov.au) | [harvey.wa.gov.au](http://harvey.wa.gov.au)







## WASTE SERVICES CALENDAR 2019/2020

let's sort what goes where



Weekly FOGO collection starting **Monday 12 August 2019**.  
Your collection day will remain the same as your existing waste service.

JULY						
S	M	T	W	T	F	S
1	2	3	4	5	6	
7	8	9	10	11	12	13
14	15	16	17	18	19	20
21	22	23	24	25	26	27
28	29	30	31			

AUGUST						
S	M	T	W	T	F	S
						1
						2
						3
						4
						5
						6
						7
						8
						9
						10
						11
						12
						13
						14
						15
						16
						17
						18
						19
						20
						21
						22
						23
						24
						25
						26
						27
						28
						29
						30
						31

SEPTEMBER						
S	M	T	W	T	F	S
1	2	3	4	5	6	7
8	9	10	11	12	13	14
15	16	17	18	19	20	21
22	23	24	25	26	27	28
29	30					

OCTOBER						
S	M	T	W	T	F	S
						1
						2
						3
						4
						5
						6
						7
						8
						9
						10
						11
						12
						13
						14
						15
						16
						17
						18
						19
						20
						21
						22
						23
						24
						25
						26
						27
						28
						29
						30
						31

NOVEMBER						
S	M	T	W	T	F	S
						1
						2
						3
						4
						5
						6
						7
						8
						9
						10
						11
						12
						13
						14
						15
						16
						17
						18
						19
						20
						21
						22
						23
						24
						25
						26
						27
						28
						29
						30

DECEMBER						
S	M	T	W	T	F	S
						1
						2
						3
						4
						5
						6
						7
						8
						9
						10
						11
						12
						13
						14
						15
						16
						17
						18
						19
						20
						21
						22
						23
						24
						25
						26
						27
						28
						29
						30
						31

Note: During Christmas week from Wednesday 25th bins will be collected the next day. Bin normally collected on Friday will be collected on Saturday.

JANUARY						
S	M	T	W	T	F	S
						1
						2
						3
						4
						5
						6
						7
						8
						9
						10
						11
						12
						13
						14
						15
						16
						17
						18
						19
						20
						21
						22
						23
						24
						25
						26
						27
						28
						29
						30
						31

FEBRUARY						
S	M	T	W	T	F	S
						1
						2
						3
						4
						5
						6
						7
						8
						9
						10
						11
						12
						13
						14
						15
						16
						17
						18
						19
						20
						21
						22
						23
						24
						25
						26
						27
						28
						29
						30

MARCH						
S	M	T	W	T	F	S
						1
						2
						3
						4
						5
						6
						7
						8
						9
						10
						11
						12
						13
						14
						15
						16
						17
						18
						19
						20
						21
						22
						23
						24
						25
						26
						27
						28
						29
						30
						31

APRIL						
S	M	T	W	T	F	S

## Fortnightly Collection



Aluminium and steel cans



Glass bottles and jars



Plastic bottles and containers



Cardboard (flattened)



Paper (no shredded paper)



Please do not place plastic bags or wrap, nappies, clothes, aerosols, gas bottles, ropes or hoses in this bin.



Plastic bags, wrap and thin plastic packaging



Nappies, personal hygiene waste, polystyrene foam



Damaged textiles



Household waste



Please do not place electronic items, fire alarms, batteries, fluo lights, chemicals, oils, paint, gas bottles or aerosols in this bin. To find out your local drop off point to recycle these items, please see your tip pass.

## Which bins go out each week?



FOGO and Rubbish

FOGO and Recycling

Your General Waste and Recycling Bins will be collected fortnightly.

Please place bins out on the kerbside before 6am on collection day. Your bin cannot be collected if it weighs more than 70kg.

## Electronic and Household Hazardous Waste

Electronic and hazardous waste can cause harm to the environment and public health. The following items are accepted for disposal at **Richardson Road & Stanley Road Waste Management Facility**.

The following electronic items will be accepted:

- Computer monitors, hard drives, key boards, printers
- Computer games and consoles
- TVs, DVD/VHS players, stereos
- Microwaves, kettles, toasters
- Phones
- Fans, sewing machines

The following items will be accepted:

- Auto: coolants, brake/clutch fluids
- Batteries: car & household
- Chemicals: pool & garden, pesticides, herbicides
- Flammable liquids
- Fluorescent tubes
- Paints & solvents
- Signal flares
- Fire extinguishers
- Acids & alkalines
- Glues & solvents
- Aerosol cans

Other items accepted for disposal at the Waste Management Facilities:

- Mattresses
- Fridges, freezers & air conditioners
- Steel & general metal
- Aluminium
- Cardboard
- Wood & timber
- Green waste
- Asbestos (special conditions apply)
- Special burials, including quarantine waste disposal
- Car & truck tyres
- Car bodies
- Building & demolition waste
- Rubble
- Sand & soil
- General waste



## Mobile Website

[watchyourwaste.wa.gov.au](http://watchyourwaste.wa.gov.au)



The Watch your Waste website has a wealth of information about what happens to your waste. It includes:

1. Information about using your 3 bin service correctly.
2. Drop off locations for hazardous items that don't belong in your bin.
3. Detailed information on 'What happens to my waste from each bin'.

Visit this website ([watchyourwaste.wa.gov.au](http://watchyourwaste.wa.gov.au)) for current waste information within our region.

## Waste Education

Waste education officers are available through the Watch Your Waste program to provide to residents, businesses, schools and community groups the following waste related activities:

- Presentations
- Workshops
- Displays
- Waste Audits
- Tours

For more information please contact 9711 1053.

## "PLEASE SLOW DOWN CONSIDER OUR KIDS"



Bin stickers and instruction sheets are available at the Shire of Harvey administration offices at 7 Mulgara Street, Australind or 102 Uduc Road, Harvey.

## Recycling and disposal guide A-Z

For a more comprehensive list and tips on how to reduce your waste please visit Watch Your Waste website

[watchyourwaste.wa.gov.au](http://watchyourwaste.wa.gov.au)

Recycling Bin
FOGO Bin
General Waste
Hazardous Household Waste (HHW)
Transfer Station/Drop off Point

<b>A</b>	<b>C</b>
Acids (HHW)	Cooking oil (no cottonseed)
Aerosol cans (HHW)	Cotton wool buds
Aluminium cans and foil	Cutlery (Plastic)
Animal droppings	
Asbestos	<b>D</b>
	Dairy products
<b>B</b>	Dog Poo
Bark	
Batteries (HHW)	<b>E</b>
Bleaches (HHW)	Egg cartons and shells
Bones and shells	Electrical items
Bottles (top/lids off)	Envelopes
Branches	
Brochures	<b>F</b>
	Fast food wrapping (paper and cardboard)
<b>C</b>	Fast food containers (plastic)
Cake trays (polystyrene)	Fire extinguishers (red only)
Cake trays (plastic)	Fish bones and scraps
Cardboard (please flatten boxes)	Flammable (liquids or containers)
Cereal boxes	Flowers
Chicken bones	Food and vegetable scraps
Coffee cups (takeaway disposable)	Fruit juice cartons
Coffee grounds	Fridges
Compact fluorescent lighting	
Compostable bags and packaging AS 4736	



## G

Garden waste
Gas cylinders
Glad wrap
Glass bottles and jars
Glossy magazines/ brochures

## H

Hair (human and animal)
-------------------------

## I

Ice cream containers (cardboard & plastic)
Insecticides (HHW)

## J

Jars (glass no lids)
Jar lids
Juice cartons/bottles/ containers (cardboard & plastic)
Junk mail

## K

Kitty litter (clay)
Kitty litter (silicon)

## L

Lawn clippings
Leaves
Light bulbs/fluorescent tubes

## M

Magazines
Magnets
Mattresses
Meat scraps and bones
Meat trays (plastic)
Meat trays (foam)
Milk bottles and milk cartons
Mobile phones

## N

Nappies (disposable)
Newspapers

## O

Oil (cooking, no cottonseed)
Organic waste

## P

Paint and tins (HHW)
Palm fronds
Paper bags
Paper towels
Pet food tins (rinsed)
Pizza boxes
Plants and plant cuttings
Plastic bags (empty)
Plastic bottle lids
Plastic containers
Plastic meat trays
Polystyrene
Printer cartridges

## R

Razors
--------

## S

Sanitary products
Seafood
Shredded paper
Steel cans

## T

Take-away food containers (plastic)
Take-away food containers (cardboard and paper)
Tea bags
Toothbrushes
Tree prunings and branches

## V

Vegetable scraps
------------------

## W

Weeds
Wine bottles
Wrapping paper

Information correct as at June 2019.

Please remove  
magnet prior  
to recycling this  
calendar in your  
recycling or your  
FOGO bin



### CONTACT US

Watch Your Waste  
Phone: 9711 1053  
Web: [www.watchyourwaste.wa.gov.au](http://www.watchyourwaste.wa.gov.au)



### CONTACT US

Shire of Harvey  
Shire Administration Offices  
102 Uduc Road,  
Harvey WA 6220  
7 Mulgara Street,  
Australind WA 6233  
PO Box 500,  
Harvey WA 6220

Open 9.00am to 4.00pm Monday to Friday (except public holidays)

Phone: 9729 0300  
Email: [shire@harvey.wa.gov.au](mailto:shire@harvey.wa.gov.au)  
Web: [www.harvey.wa.gov.au](http://www.harvey.wa.gov.au)



# A quick and easy guide to your new three bin waste collection system.

For more information check out  
[watchyourwaste.wa.gov.au](http://watchyourwaste.wa.gov.au)  
[harvey.wa.gov.au/organics](http://harvey.wa.gov.au/organics)

## Household Hazardous Waste (HHW) must not go in kerbside bins.

These products are corrosive, flammable, toxic or reactive and present a potential risk to human health and the environment.



## Electronic Waste (e-waste) must not go in kerbside bins.

Recycling e-waste reduces toxins leaching into landfill and reduces the need for new raw materials.



For HHW and e-waste drop off points please contact the Shire or Waste Education Officers below.

### Transfer Stations

Bunbury-Harvey Regional Council, Stanley Road Waste Management Facility

Open 7 days a week, 8.00am to 5.00pm (except Good Friday, Christmas Day and New Years Day)  
Stanley Road, Wellesley (off Australind By-Pass)  
Phone: (08) 9797 2404

### Richardson Road Refuse Site Harvey

Open 7 days a week, 8.00am to 5.00pm (except Good Friday, Christmas Day and New Years Day)  
An attendant will oversee use of the site during operating hours.

### Find out more information

Shire of Harvey (08) 9729 0300  
Regional Waste Education Officers (08) 9711 1053



# Harvey, let's sort what goes where





# What can go in your recycling bin?

All items should be clean and empty.  
Remove lids.  
Place items loosely in the bin.



✗ Please do not place plastic bags or wrap, nappies, clothes, aerosols, gas bottles, ropes or hoses in this bin.

# What can go in your FOGO bin?

If it once grew,  
it can be placed in your FOGO bin.  
FO - Food Organics | GO - Garden Organics



✗ Please do not place plastic bags, clothes, treated timber, recyclables or general rubbish in this bin.

# What can go in your general waste bin?

Your general waste bin may also have a dark green lid.



✗ Please do not place electronic items, fire alarms, batteries, fluoro lights, chemicals, oils, paint, gas bottles or aerosols in this bin. To find out your local drop off points to recycle these items, please see your tip pass.



# What you will hear

‘I bury my rubbish’

‘I burn my rubbish’

‘I have chooks/dog’

‘I have my own compost bin’

‘I don’t have room for another bin’

‘How do I open my bags’

‘I’ve run out of bags’

‘When is the truck coming to collect my kitchen caddy’

‘You can’t put bananas in your FOGO bin they aren’t green’



# Positive reinforcement

Fire mitigation – particularly in semi rural areas  
Weekly yard clean-up for elderly or stay at home parents.

Talk about the things they can put in their FOGO bin that they can't compost. Meat, bones, dairy,

Talk about the Pizza boxes, garlic bread bags, paper bags, serviettes, tissues, toilet rolls, small pieces of paper, cardboard and paper if their recycling bin is full.

Environmental benefits

**The Bunbury Harvey Regional Council  
proudly diverts 11 million kilograms of organic  
waste from landfill, preventing 20,900 tonnes of  
carbon dioxide from entering the atmosphere  
each year.**



Preventing 20,900 tonnes of carbon dioxide entering the atmosphere

Equivalent to emissions from



5112 households

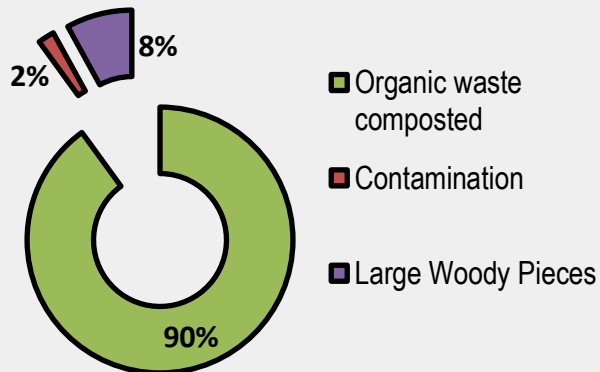


5225 cars

11 million kg's of organic waste diverted from landfill each year



Organics Processing



[watchyourwaste.wa.gov.au](http://watchyourwaste.wa.gov.au)



**BUNBURY HARVEY  
REGIONAL COUNCIL**  
HARVESTING RESOURCES FROM YOUR WASTE

[bhrc.wa.gov.au](http://bhrc.wa.gov.au)



# BUNBURY HARVEY REGIONAL COUNCIL

HARVESTING RESOURCES FROM YOUR WASTE



Show the  
process and  
location it is  
processed



Show things like contamination  
photos on site and how break  
down happens



# Waste Education – centralised website



[Home](#) [Your Council](#) [Transfer Stations](#) [Containers for Change](#) [e-news](#) [REDcycle](#) [Responsible Cafes](#)

[Educational Resources](#) [Household Hazardous Waste](#) [About Us](#)



Meat, bones, fruit and veg scraps



Small branches, flowers, lawn clippings



Pizza boxes, dog poo, cardboard, shredded paper, compostable bags



 Please do not place plastic bags, clothes, treated timber, recyclables or general rubbish in this bin.

## Home

Welcome to Watch Your Waste

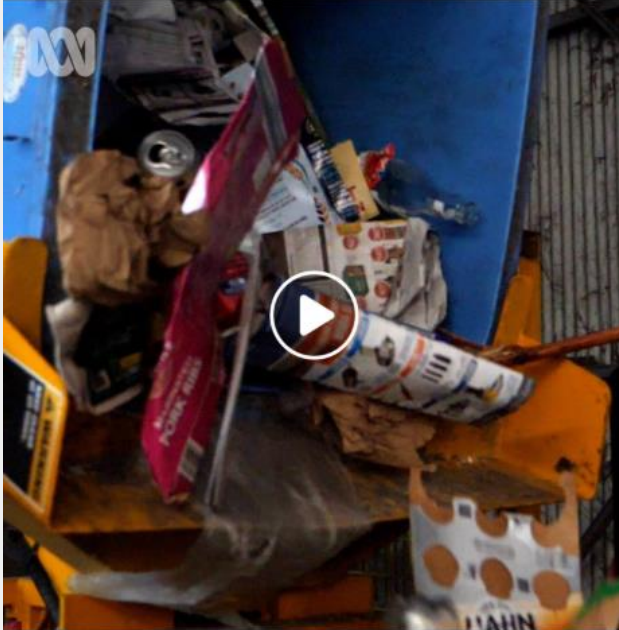
# Social media

**Watch Your Waste South West**  
Published by Taryn Davis [?] · 21 May at 20:45 · 🌐

This great video of a recent audit of recycling bins from the Shire of Capel might just help you out with your recycling!

Remember we are always on hand to help you out with what goes in your kerbside bins and what to do with what doesn't go in them!

Send us a message, give us a call or visit our website ✓  
<https://watchyourwaste.wa.gov.au>... See more



20,933 Views

ABC South West  
21 May at 12:26 · 🌐

How good are you at recycling? ♻️ ♻️ ♻️

**Watch Your Waste South West**  
Published by Mandy Farr [?] · 21 May at 16:36 · 🌐

🐝 Wanting a sustainable alternative to horrible cling wrap for your home and family?!

🐝 Check out our Beeswax Wrap workshop tutorial we did for I HEART DARDANUP this afternoon.

🐝 A fantastic option for you to DIY, it will save you money and have a positive impact on our environment!



2,726 People reached      399 Engagements      [Boost Post](#)

👍❤️ 43      9 comments 15 shares

👍 Like      💬 Comment      ➦ Share      🌐



## Watch Your Waste South West

Published by Taryn Davis [?] · 19 May at 20:01 · 🌐

What do all these things pictured have in common?

They were all found in various general waste or landfill bins 😞

All of these things

🌱 plants, cardboard, paper, food waste, dry plant matter and sandwich papers can ALL go into your FOGO bin, and why does it matter?

When organic waste is sent to landfill it is compacted and rots underground producing methane, a greenhouse gas 25 times more potent than carbon dioxide.

So 'Be A Good Sort' and utilise your green bin as much as possible, it helps reduce the negative impact on the environment and the Food Organics and Garden Organics (FOGO) gets turned into a rich certified organic compost.

Reduce the amount you send to landfill by maximising the correct use of all your bins.

Keep up the great work and remember to 'Watch Your Waste'.



2,609

People reached

583

Engagements

Boost Post



21

6 comments 12 shares



Like



Comment



Share



Most relevant ▾



Comment as Watch Your Waste South West



**Courtney Delaporte** Wish the Shire of Dardanup would provide a Fogo Bin so we could!!!

Like · Reply · Message · 1w



2



**Watch Your Waste South West** Courtney Delaporte we would love that too. You could send them an email and let them know you would like them to Introduce FOGO. 🍀



1



# Waste Education – grass roots engagement with schools and events



# Waste Education - calendars

## SHIRE OF CAPEL 2019/2020 let's sort what goes where

Collected weekly: FOOD  
Collected fortnightly: Recyclables  
Collected fortnightly: General waste

Please place bins 0.5 metres apart on the kerbside before 6am on collection day. Your bin cannot be collected if it weighs more than 70 kg.

Next day collection due to public holiday.

JULY							AUGUST							SEPTEMBER						
S	M	T	W	T	F	S	S	M	T	W	T	F	S	S	M	T	W	T	F	S
1	2	3	4	5	6		1	2	3	4	5	6	7	1	2	3	4	5	6	7
8	9	10	11	12	13	14	4	5	6	7	8	9	10	8	9	10	11	12	13	14
15	16	17	18	19	20	21	11	12	13	14	15	16	17	15	16	17	18	19	20	21
22	23	24	25	26	27	28	18	19	20	21	22	23	24	22	23	24	25	26	27	28
29	30	31					25	26	27	28	29	30		29	30					

OCTOBER							NOVEMBER							DECEMBER						
S	M	T	W	T	F	S	S	M	T	W	T	F	S	S	M	T	W	T	F	S
1	2	3	4	5	6	7	3	4	5	6	7	8	9	1	2	3	4	5	6	7
8	9	10	11	12	13	14	10	11	12	13	14	15	16	8	9	10	11	12	13	14
15	16	17	18	19	20	21	17	18	19	20	21	22	23	22	23	24	25	26	27	28
22	23	24	25	26	27	28	24	25	26	27	28	29	30	29	30	31				

Note: During Christmas week from Wednesday 25th bins will be collected the next day. Friday will be collected on Saturday.

JANUARY							FEBRUARY							MARCH						
S	M	T	W	T	F	S	S	M	T	W	T	F	S	S	M	T	W	T	F	S
1	2	3	4	5	6	7	9	10	11	12	13	14	15	1	2	3	4	5	6	7
8	9	10	11	12	13	14	16	17	18	19	20	21	22	8	9	10	11	12	13	14
15	16	17	18	19	20	21	23	24	25	26	27	28	29	15	16	17	18	19	20	21
22	23	24	25	26	27	28								22	23	24	25	26	27	28

APRIL							MAY							JUNE						
S	M	T	W	T	F	S	S	M	T	W	T	F	S	S	M	T	W	T	F	S
1	2	3	4	5	6	7	3	4	5	6	7	8	9	1	2	3	4	5	6	7
8	9	10	11	12	13	14	10	11	12	13	14	15	16	7	8	9	10	11	12	13
15	16	17	18	19	20	21	17	18	19	20	21	22	23	14	15	16	17	18	19	20
22	23	24	25	26	27	28	24	25	26	27	28	29	30	21	22	23	24	25	26	27

Your collection map is available to view at [capel.wa.gov.au](http://capel.wa.gov.au) | [watchyourwaste.wa.gov.au](http://watchyourwaste.wa.gov.au)

Meat, bones, fruit and veg scraps

Small branches, flowers, lawn clippings

Pizza boxes, dog poo, cardboard, shredded paper, compostable bags

Please do not place plastic bags, clothes, treated timber, recyclables or general rubbish in this bin.

Aluminium and steel cans

Glass bottles and jars

Plastic bottles and containers

Cardboard (flattened)

Paper (no shredded paper)

Please do not place plastic bags or wrap, nappies, clothes, aerosols, gas bottles, ropes or hoses in this bin.

Plastic bags, wrap and thin plastic packaging

Nappies, personal hygiene waste, polystyrene foam

Damaged textiles

Household waste

Please do not place electronic items, fire alarms, batteries, fluo lights, chemicals, oils, paint, gas bottles or aerosols in this bin. To find out your local drop off point to recycle these items, please see your tip pass.

Please remove magnet prior to recycling this calendar in your recycling or your FOGO bin

## Electronic and Household Hazardous Waste (HHW)

Electronic and hazardous waste can cause harm to the environment and public health. Electronic Waste must be taken to the Capel Waste Transfer Station located at 79 Range Road, Capel or Stanley Road Waste Management Facility located at 45 Stanley Road, Wellesley.

The Capel Waste Transfer Station is open on public holidays apart from Christmas Day and Good Friday.

Household hazardous waste such as gas bottles and paint should be taken to the Stanley Road Waste Management Facility.

Ag and Vet chemical drums can be taken to Capel Waste Transfer Station.

**drum/MUSTER**

Capel Waste Transfer Station	Stanley Road Waste Management Facility
Saturday: 9.30am-5.00pm	Saturday: 8.00am-5.00pm
Sunday: 9.30am-5.00pm	Sunday: 8.00am-5.00pm
Monday: 9.30am-5.00pm	Monday: 8.00am-5.00pm
Tuesday: 9.30am-5.00pm	Tuesday: 8.00am-5.00pm
Wednesday: CLOSED	Wednesday: 8.00am-5.00pm
Thursday: CLOSED	Thursday: 8.00am-5.00pm
Friday: 9.30am-5.00pm	Friday: 8.00am-5.00pm

**MISSED BIN COLLECTIONS:**  
Cleanaway  
**13 13 39**

**NEW SERVICES AND REPAIRS:**  
Shire of Capel  
**9727 0222**

**CONTACT US**  
Shire of Capel  
31 Forrest Road,  
Capel WA 6271  
PO Box 369,  
Capel WA 6271

Open 8.30am to 4.30pm Monday to Friday (except public holidays)  
Phone: (08) 9727 0222  
Email: [info@capel.wa.gov.au](mailto:info@capel.wa.gov.au)  
Web: [www.capel.wa.gov.au](http://www.capel.wa.gov.au)  
Web: [www.watchyourwaste.wa.gov.au](http://www.watchyourwaste.wa.gov.au)



# Waste Education – bin tagging



## THANK YOU

Your efforts help make high quality compost.

What **DOES** go in your FOGO bin:



### USING YOUR FOGO BIN CORRECTLY:

- ✓ Makes great compost
- ✓ Reduces harmful greenhouse gases
- ✓ Reduces waste to landfill



[watchyourwaste.wa.gov.au](http://watchyourwaste.wa.gov.au)

[collie.wa.gov.au](http://collie.wa.gov.au)



## WE ASK ONE SMALL FAVOUR

Please **DO NOT** place these contaminants in your FOGO bin.



OTHER ☐ \_\_\_\_\_

THANK YOU FOR YOUR EFFORTS



[watchyourwaste.wa.gov.au](http://watchyourwaste.wa.gov.au)

[collie.wa.gov.au](http://collie.wa.gov.au)



## WE WERE NOT ABLE TO COLLECT YOUR BIN TODAY

Please remove the following contaminants from your FOGO bin.

Your bin will then be collected on the next organics collection.



OTHER ☐ \_\_\_\_\_



[watchyourwaste.wa.gov.au](http://watchyourwaste.wa.gov.au)

[collie.wa.gov.au](http://collie.wa.gov.au)



## Contact details

Waste Education Coordinator

Taryn Davis

9711 1053

0407 797 444

[tdavis@bhrc.wa.gov.au](mailto:tdavis@bhrc.wa.gov.au)

[watchyourwaste.wa.gov.au](http://watchyourwaste.wa.gov.au)

