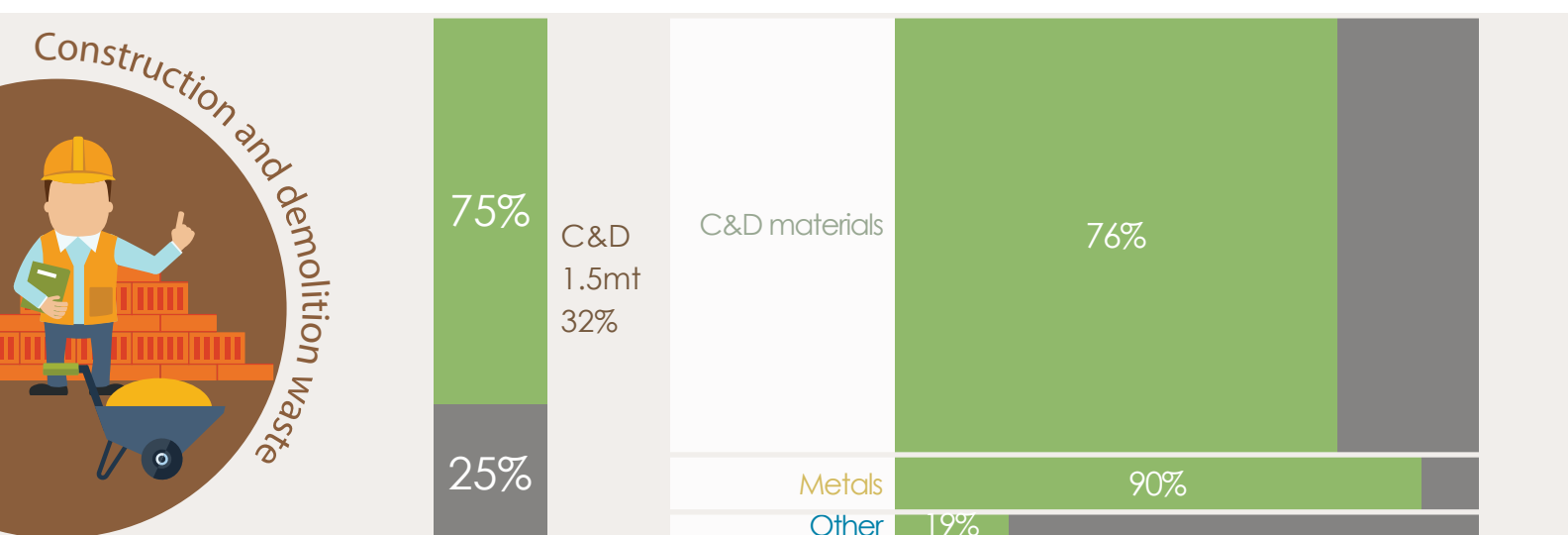
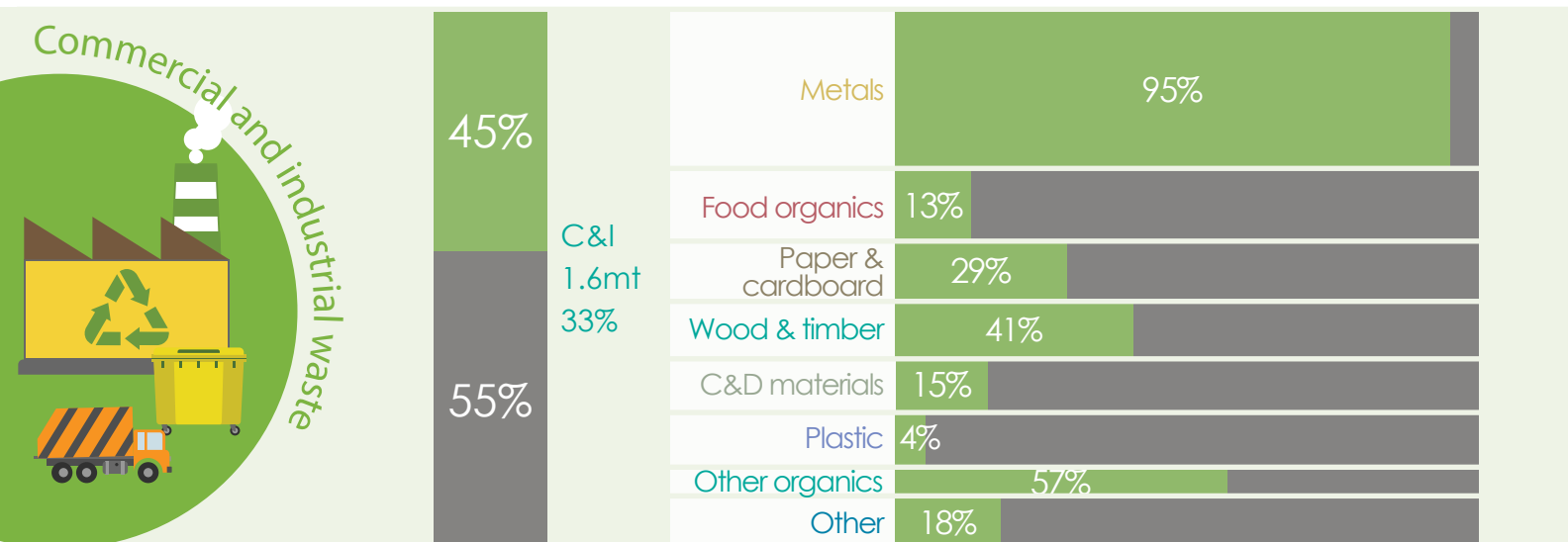
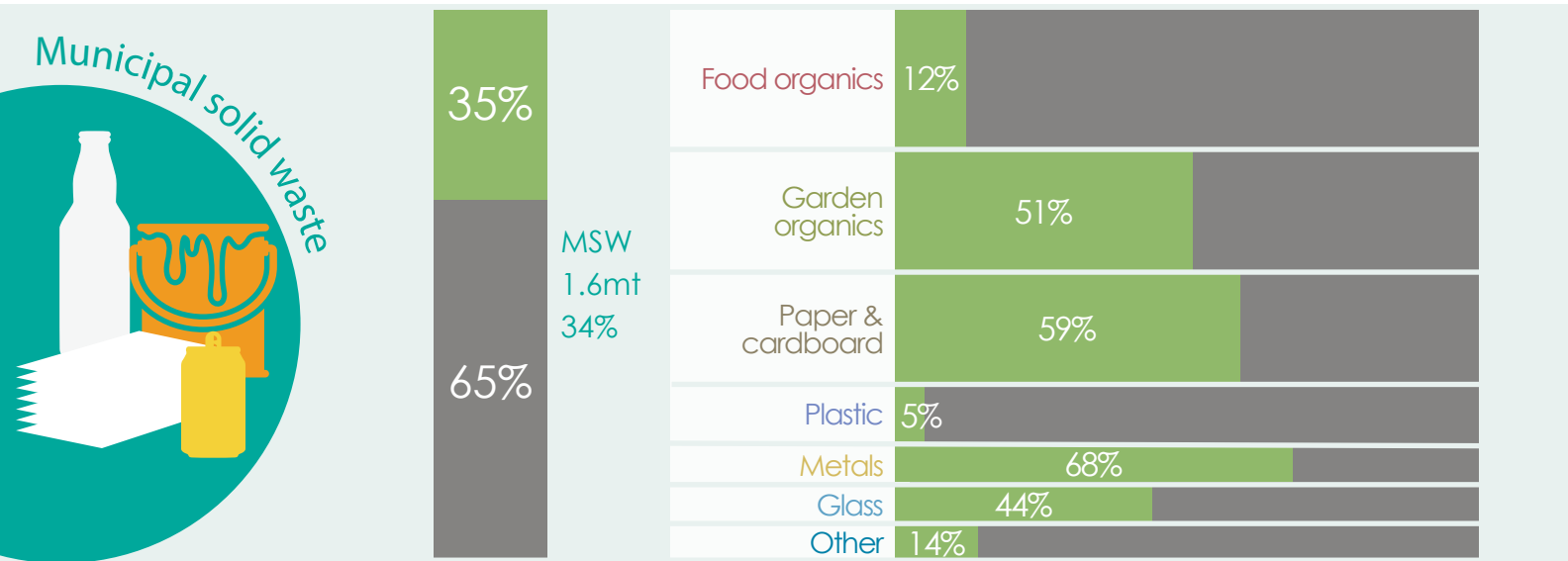


# Waste and recycling snapshot: WA 2017–18

Generation by stream 2017–18

Generation by material / **Recovery** : landfill



Data sourced from Recycling Activity Review 2017–18, and national waste generation and recycling data. Some recycling data is estimated based on assumptions provided for by national waste generation and recycling data, and WA recycling activity review data. Band width is proportional to tonnes.

