



WASTE  
AUTHORITY

WA...TOO GOOD TO WASTE

## Strategic Waste Infrastructure Planning Project (SWIP)

### Update

- Planning and Approvals
- Facilities and Sites

Cecilia Jordan

Policy Officer

Waste Management Branch

Department of Environment Regulation

**Four main elements of the *Waste and Recycling Infrastructure Plan for the Perth metropolitan and Peel regions*:**

- 1. Planning and Approvals**
- 2. Facilities and Sites**
3. Technology
4. Governance and Funding

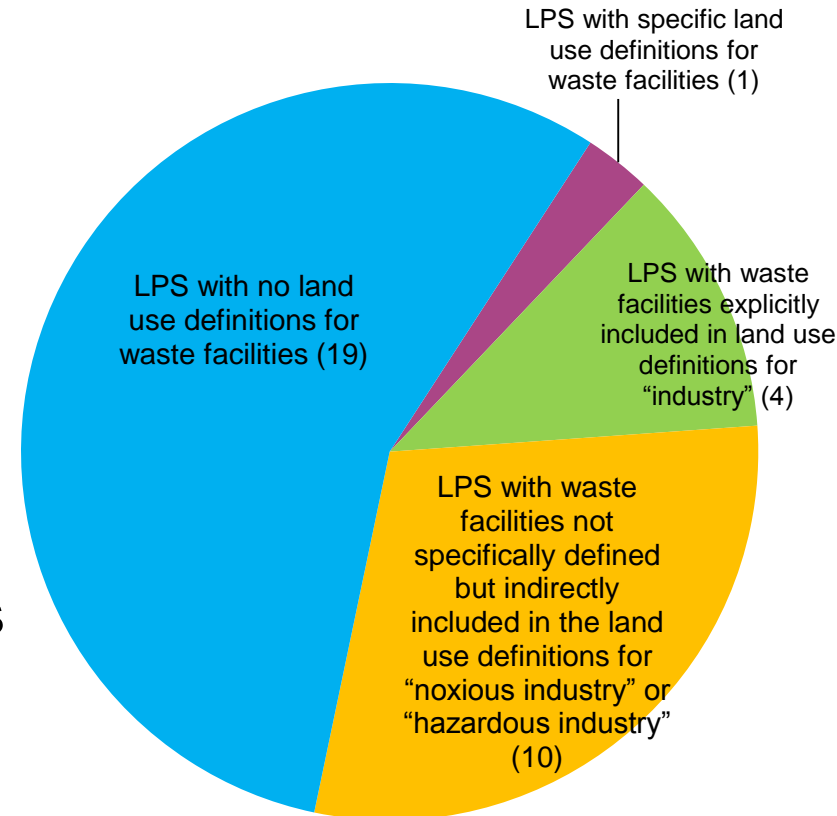
# Planning and Approvals:

Provide information and recommendations on:

- The land use planning system in WA, as it relates to waste facilities
- Environmental and planning opportunities and constraints for waste facilities in the Perth metropolitan and Peel regions, and how these may be increased or minimised respectively
- Existing land use planning mechanisms which may be used to integrate waste management issues into the WA planning framework, and secure sites for waste facilities

# Planning and Approvals:

- Under WA planning legislation and policies waste facilities are often not well defined/described
- Little/no differentiation between types of waste facilities
- Local Planning Schemes: high level of variation
- No definitions for waste facilities in the MST



# Planning and Approvals:

## Issues:

- Waste management often not considered with other essential services in land use planning policies/strategies
- Waste facilities not a defined land use
- Unclear development approvals process – for proponents and decision makers

## Response:

- Working with DOP/WAPC to include definitions for waste and waste facilities in the MST
- Investigating potential for a SPP for waste facilities

# Planning and Approvals:

## Issues:

- Finding sites for development of waste facilities
- Encroachment, lack of long term security

## Response:

- Using existing mechanisms to secure waste facility sites for the long term: reservation for public purpose use through the MRS/PRS

# Facilities and Sites:

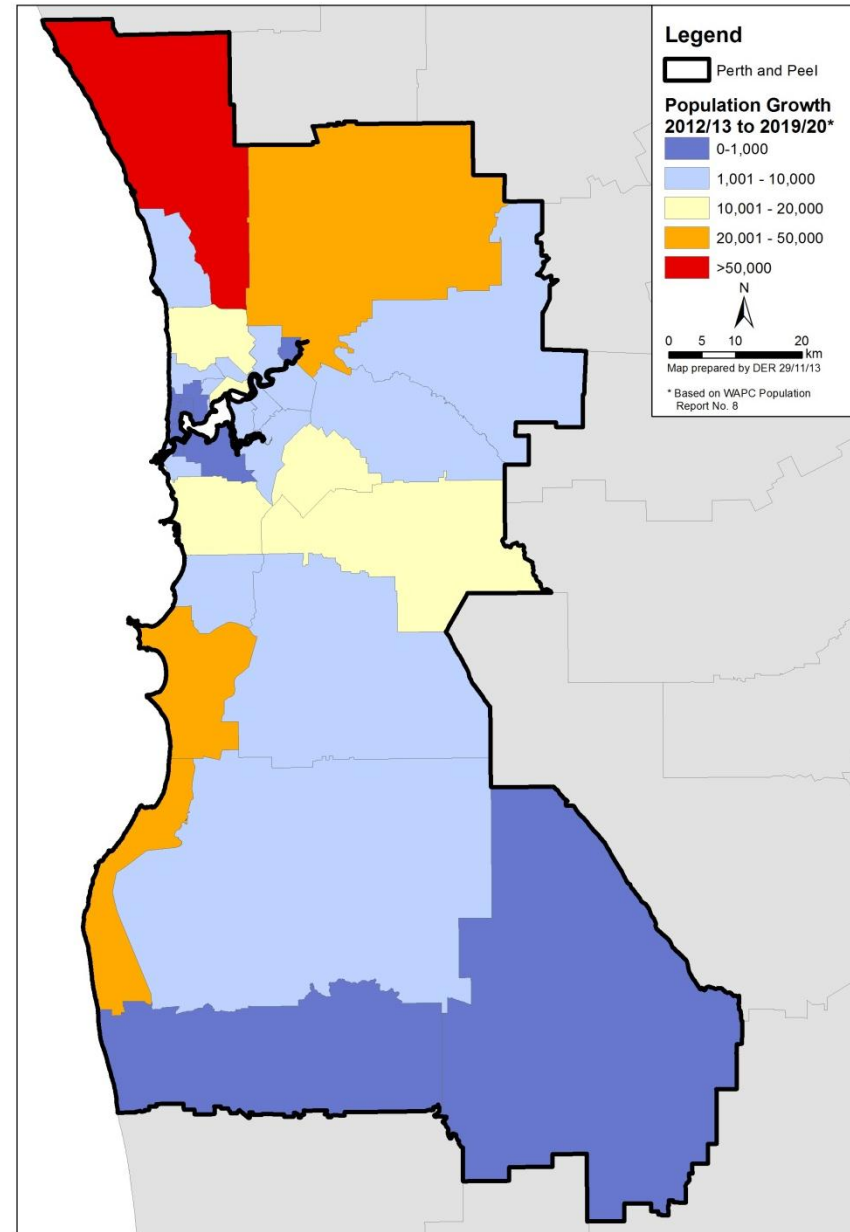
Provide information and recommendations on:

- The existing capacity of waste facilities in the Perth metropolitan and Peel regions, and likely waste infrastructure needs for 2015, 2020 and the '3.5 million city'
- Potential and preferred sites for development of new waste facilities, including opportunities for co-location, waste precincts, and industrial ecology

## Facilities and Sites:

- 1.93 million 2012/13
- 2.20 million by 2019/20
- 3.5 million by ~ 2050

Population is anticipated to grow at different rates across Perth and Peel





## Facilities and Sites:

### Waste generation in Perth and Peel:

- Average of 2.72 tonnes per capita
  - 0.65 tonnes MSW per capita
  - 0.72 tonnes C&I per capita
  - 1.35 tonnes C&D per capita

### Projections for Perth and Peel:

- 5.26 million tonnes 2012/13
- 5.99 million tonnes 2019/20
- 9.52 million tonnes when population reaches 3.5M

## Facilities and Sites:

2011/12:

- 39% of all waste diverted from landfill (2.04M tonnes)

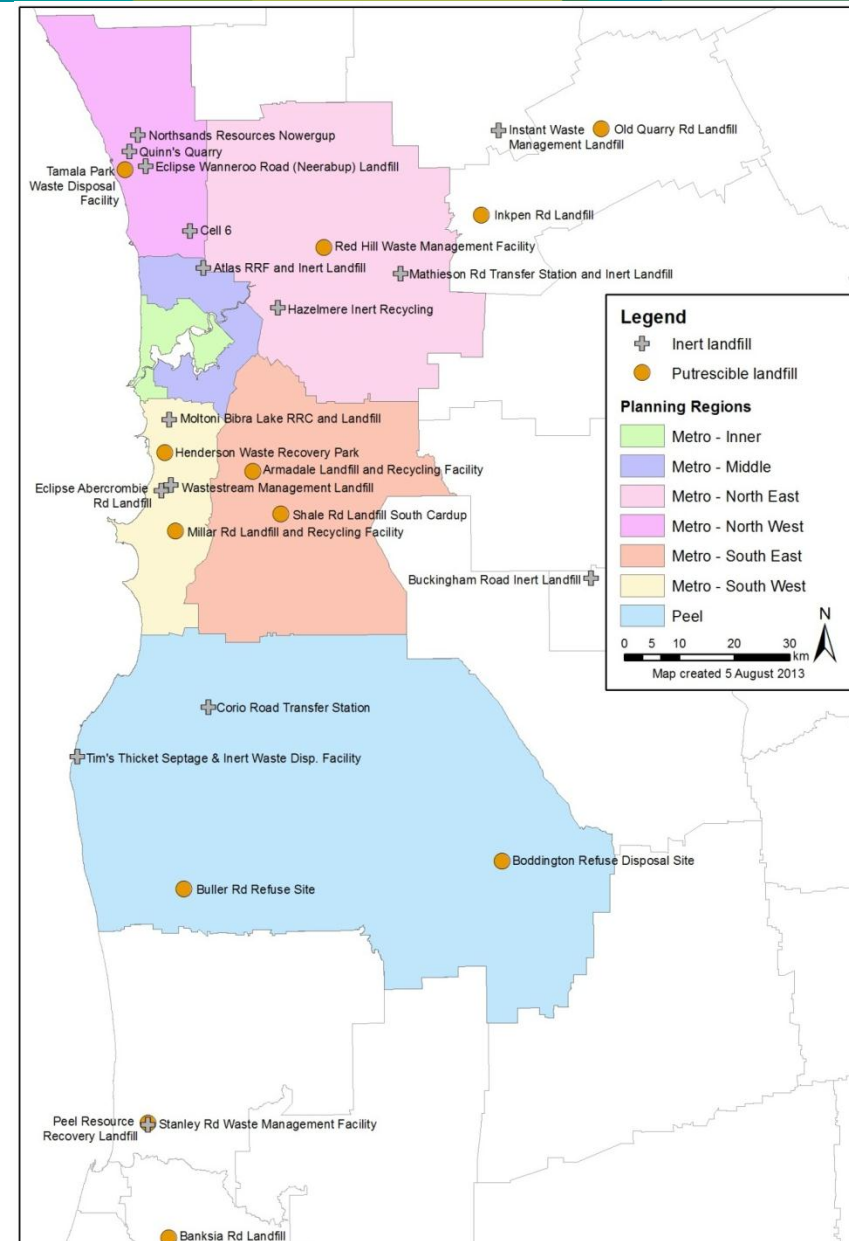
To meet the Waste Strategy landfill diversion targets for Perth and Peel:

- 56% diversion in 2014/15 (3.07M tonnes)
- 71% diversion in 2019/20 (4.25M tonnes)

Significant increase in diversion capacity required.

## Facilities and Sites:

- 12 putrescible landfills which accept waste generated in Perth and Peel
- 5 likely to be closed by around 2030
- 1 new landfill under construction
- 17 inert landfills which accept waste generated in Perth and Peel



# Facilities and Sites:

## Remaining landfill capacity

If Waste Strategy landfill diversion targets are met:

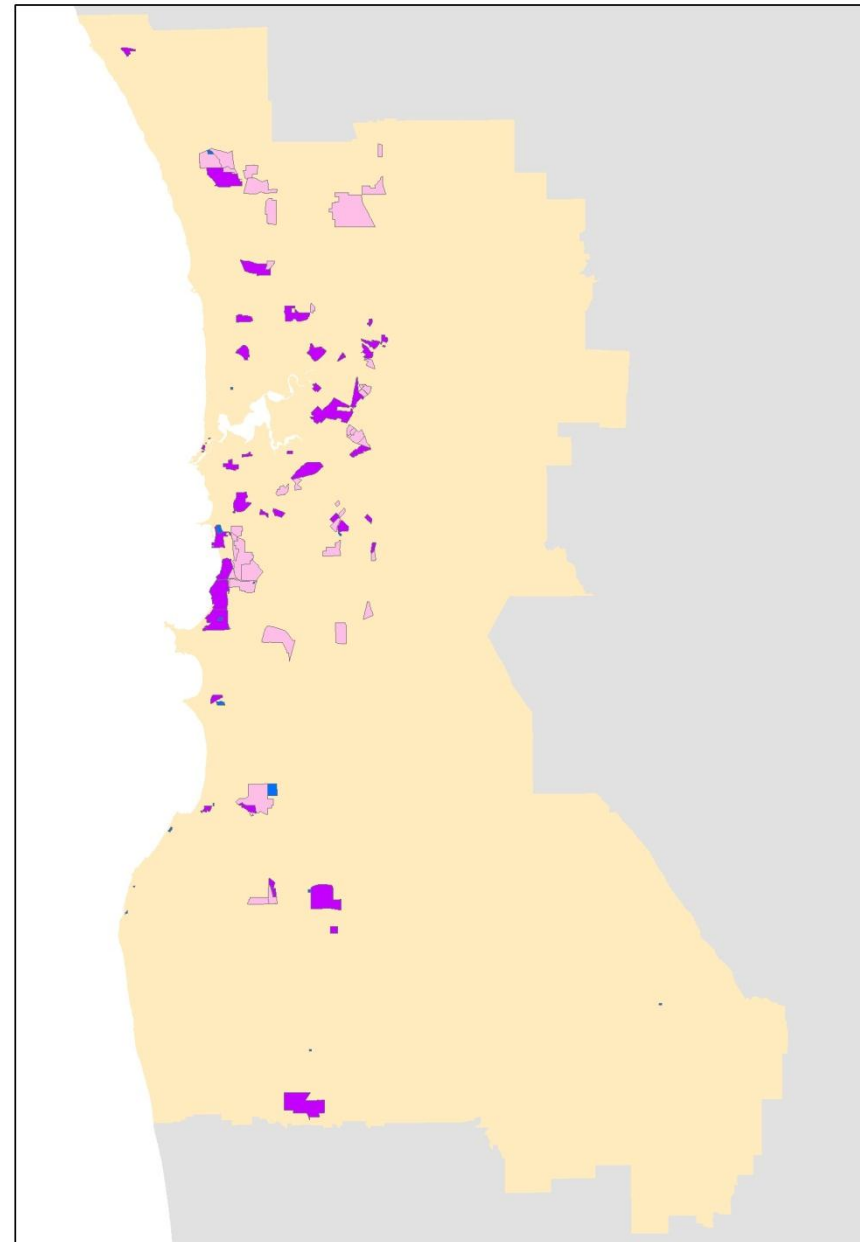
- Putrescible landfill: early 2030's
- Inert landfill: mid 2030's

If Waste Strategy landfill diversion targets are NOT met:

- Putrescible landfill: early 2020's
- Inert landfill: mid 2020's

## Facilities and Sites:

- Stage 1 (broad, first pass) assessment currently underway
- Not identifying landfill sites, but modelling future capacity requirements



## Next Steps:

- Stage 1 site assessment: consultants report due mid December
- Continue to work with Department of Planning and WAPC on waste management planning issues

# Feedback

For more information and feedback:

Website: [www.wasteauthority.wa.gov.au](http://www.wasteauthority.wa.gov.au)

Email: [swipwg@der.wa.gov.au](mailto:swipwg@der.wa.gov.au)